



katalog pdf.



ROCKBREAKER BOOM SYSTEM





ROCKBREAKER
BOOM SYSTEM

DRIVING INCREASES IN PRODUCTIVITY AND WORK SAFETY

ON CRUSHING LINES IN
QUARRIES



ABOUT THE COMPANY

Since its foundation in 1994, DAVON s.r.o. has always been a privately owned Czech company that focuses on the development of its own specialised products for the building and mining industries. First a comprehensive range of hydraulic grabs was developed, followed by a wide range of stationary rockbreaker boom systems, which have gone on to constitute the company's main export today. A comprehensive line of buckets for excavators and loaders was created later. Several single-purpose construction machines were also built according to particular customer requirements. State-of-the-art hardware and software is used for the development of our products. A standardised information system is used for the management of the whole company, from pre-production to dispatch and subsequent warranty and post-warranty servicing.

CERTIFIED PRODUCTION

The company deployed a comprehensive quality management system per the ČSN EN ISO 9001 standard in 2003, gaining certification the following year. The company gained the ČSN EN ISO 3834-2 welding certification in 2012. DAVON also implements management systems compliant with the ČSN EN ISO 14001 environmental management, ČSN OHSAS 18001 occupational health and safety management and ČSN ISO 50001 energy management standards.

All with the objective of meeting the ever-growing demands of our customers and to supply quality, reliable and safe products characterised by a combination of excellent performance and ease of operation.



DAVON s.r.o. | Šumperská 1353 | 783 91 Uničov | Czech Republic

Phone: +420 585 004 532 | Fax: +420 585 053 229 | Mobile: +420 737 249 234 | e-mail: sales@davoncompany.com
 GPS: 49°47'0.607"N, 17°7'28.229"E | www.davoncompany.com

COMPANY BRANDS



RK ROCKBREAKER BOOM SYSTEM
 For crushing lines in quarries.



GRABS
 Grabs in a broad variety of types, variants and sizes.



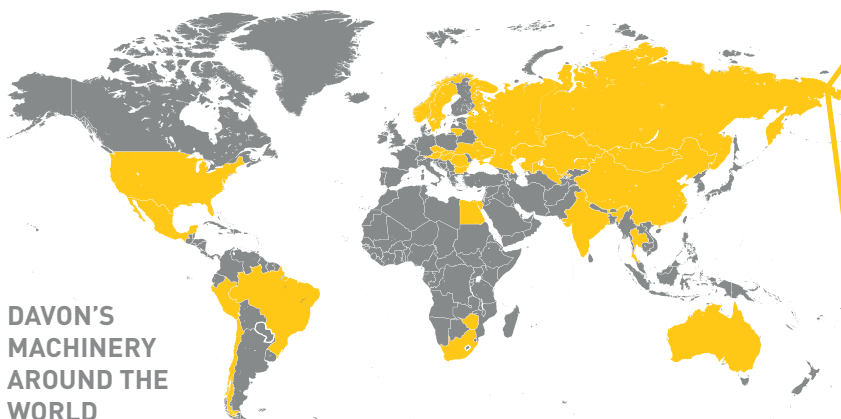
BUCKETS
 Production and sales of all types of buckets for nearly all types of construction machinery.



SPECIAL CONSTRUCTION MACHINERY
 One-off and custom special construction and mining machinery.



COOPERATION
 Custom designed machinery produced to meet specific customer needs.



ROCKBREAKER MACHINERY AROUND THE WORLD

- 5 continents
- 25 countries
- 228 installations
- 83 of which are in the Czech Republic



ROCKBREAKER
BOOM SYSTEM



Daron

RK ROCKBREAKER BOOM SYSTEM

**DESIGNED TO BREAK STONE, ORE, SLAG,
CONCRETE AND OTHER MATERIALS.**

**EASY SOLUTION TO RESOLVE LARGE BOULDER
CLOGGING OF PRIMARY CRUSHERS IN MINING
AND ROCK PROCESSING WHILE IMPROVING WORK
SAFETY AND CRUSHING LINE PRODUCTIVITY.**

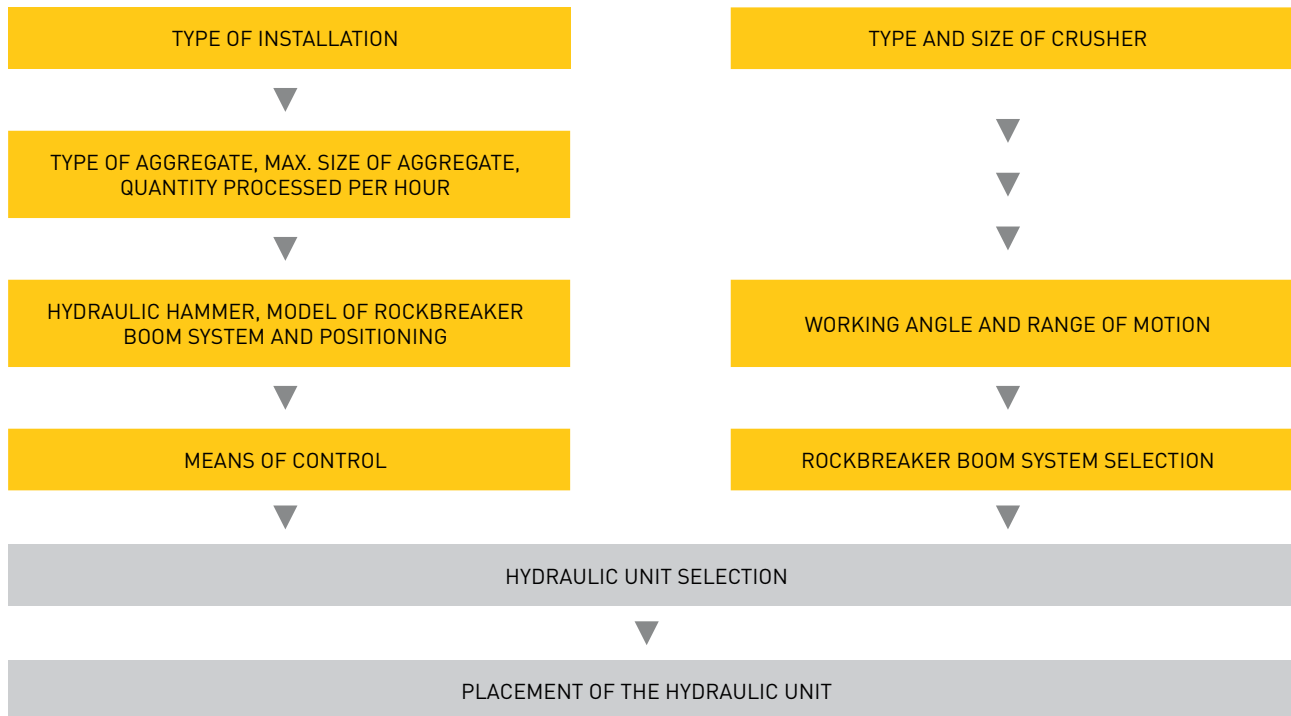
**ALSO USED IN PRIMARY CRUSHING ON GRATE
SYSTEMS**

- ENSURES THE SMOOTH FLOW OF MATERIALS, IMPROVING PRODUCTIVITY BY REDUCING CRUSHER DOWN-TIME.
- HIGH DEGREE OF OPERATOR SAFETY
- SIMPLE CONTROLS AND MAINTENANCE
- HIGH RELIABILITY
- HIGHLY DURABLE
- BROAD RANGE OF LONG AND DEEP REACH OPTIONS FOR ALL TYPES OF CRUSHING LINES
- PROPRIETARY HIGH OUTPUT OF THE HYDRAULIC POWER UNITS
- SOPHISTICATED CONTROL SYSTEM
- RADIO REMOTE CONTROL OPTION AVAILABLE
- ADAPTABLE TO HYDRAULIC HAMMERS FROM ANY MANUFACTURER
- MODELS AVAILABLE FOR ARCTIC CONDITIONS AT TEMPERATURES DOWN TO -43°C, FOR TROPICAL CONDITIONS, FOR USE AT HIGH ELEVATIONS AND FOR EXPLOSIVE ENVIRONMENTS
- BROAD RANGE OF ACCESSORIES

WE PROVIDE PERSONALISED AND COMPREHENSIVE SOLUTIONS, FROM PROJECT DESIGN, MANUFACTURING AND ON-SITE DELIVERY, TO INSTALATION, COMMISSIONING, AND USER TRAINING.

SELECTING EQUIPMENT

Selecting a suitable type of rockbreaker boom system and accessories is based on the type of crushing line, the type and size of the crusher itself and the type and size of the aggregates being processed.



SEPARATE APPLICATIONS FOR



mobile crushers



grates



jaw crushers



gyrating crushers

MODEL

- FOR HIGH ELEVATIONS
- ARTIC MODEL FOR LOW TEMPERATURES
- TROPICAL CONDITIONS
- EXPLOSIVE ENVIRONMENTS

SELECTING A SUITABLE ROCKBREAKER BOOM SYSTEM

BY THE "RK ROCKBREAKER BOOM SYSTEM APPLICATION OVERVIEW" TABLE

TYPES OF AGGREGATES

- CONSTANT
- CONTROL

HYDRAULIC HAMMER

We supply hammers from various manufacturers, but Atlas Copco is our preferred and recommended manufacturer.

ACCESSORIES

- Manual central lubrication for RK1 to RK3 classes included as standard
- Automatic central lubrication for RK4 to RK7 classes included as standard; optional for RK1 to RK3 classes
- Remote control
- Radio remote control for RK4 to RK7 classes included as standard
- Operator's cab
- Operator's control station
- GSM router for easy diagnostics and equipment status monitoring
- Programmable PLC controller (Profi bus, Modbus communication, etc.)
- Load-bearing structure (boom)
- Basket for a concrete foundation
- Hammer stand
- Extension
- Hook
- Bucket
- Grab
- Mechanical quick coupler

RK ROCKBREAKER BOOM SYSTEM APPLICATION OVERVIEW

| | Implement model | Application | Max. horizontal hammer reach (m) | Maximum hammer weight (kg) | Recommended hammer (Epiroc) | | Recommended power unit (kW) | | | |
|-----------|-----------------|-----------------|----------------------------------|----------------------------|-----------------------------|--------|-----------------------------|--------|-------|--------|
| | | | | | from | to | from | to | | |
| | RK1027 | ■ ■ | 3,1 | 300 | SB 102 | SB302 | HA15 | HA18 | | |
| | RK2027 | ■ ■ | 2,7 | | | | | | | |
| | RK2030 | ■ ■ | 3,0 | 300 | SB 102 | SB302 | HA15 | HA18 | | |
| | RK2031 | ■ ■ | 3,1 | | | | | | | |
| | RK2035 | ■ ■ | 3,5 | | | | | | | |
| | RK3027 | ■ ■ | 2,7 | | | | | | | |
| | RK3033 | ■ ■ ■ | 3,3 | 720 | SB302 | SB702 | HA18 | HA37R | | |
| | RK3035 | ■ ■ ■ | 3,5 | | | | | | | |
| | RK3036 | ■ ■ ■ | 3,6 | | | | | | | |
| | RK3042 | ■ ■ ■ | 4,2 | | | | | | | |
| | RK3043 | ■ ■ ■ | 4,3 | | | 520 | SB552 | HA30R | | |
| | RK3052 | ■ ■ ■ | 5,2 | | | | | | | |
| | RK3057 | ■ ■ ■ | 5,7 | | | | | | | |
| | RK3061 | ■ ■ ■ | 6,1 | | | | | | | |
| | RK4046 | ■ ■ | 4,6 | 1200 | | MB1200 | HA37R | HA45R | | |
| | RK4057 | ■ ■ | 5,7 | | | | | | | |
| | RK4060 | ■ ■ | 6,0 | | | | | | | |
| | RK4064 | ■ ■ | 6,4 | | | | | | | |
| | RK4069 | ■ ■ | 6,9 | 1000 | MB750 | MB1000 | HA37R | HA45R | | |
| | | RK4072 | ■ ■ | | | | | | 7,2 | |
| | | RK4076 | ■ ■ | | | | | | 7,6 | |
| | | RK4089 | ■ ■ | | | | | | 8,9 | |
| | RK4101 | ■ ■ | 10,1 | 3600 | MB1500 | HB3600 | HA55R | HA132R | | |
| | RK4046-HD | ■ | 4,6 | | | | | | | |
| | RK4060-HD | ■ | 6,0 | | | | | | | |
| | RK4064-HD | ■ | 6,4 | | | | | | | |
| | RK4069-HD | ■ | 6,9 | | | 2500 | MB750 | HB2500 | HA37R | HA75R |
| | | RK4076-HD | ■ | | | | | | | |
| RK4089-HD | | ■ | 8,9 | | | | | | | |
| | | | | | | | | | | |
| | RK5050 | ■ ■ | 5,0 | 2000 | | HB2000 | HA37R | HA75R | | |
| | RK5060 | ■ ■ | 6,0 | | | | | | | |
| | RK5069 | ■ ■ | 6,9 | | | | | | | |
| | RK5085 | ■ ■ | 8,5 | 1700 | MB750 | MB1700 | HA37R | HA55R | | |
| | | RK5089 | ■ ■ | | | | | | 8,9 | |
| | | RK5098 | ■ ■ | | | | | | 9,8 | |
| | | RK5108 | ■ ■ | | | | | | 10,8 | |
| | RK6110 | ■ | 11,0 | 2500 | | HB2500 | HA55R | HA75R | | |
| | RK6128 | ■ | 12,8 | | | | | | | |
| | RK6130 | ■ | 13,0 | | | | | | | |
| | RK6145 | ■ | 14,5 | 2000 | MB1700 | HB2000 | HA55R | HA75R | | |
| | | RK6151 | ■ | | | | | | 15,1 | |
| | | RK6155 | ■ | | | | | | 15,5 | |
| | | RK6168 | ■ | | | | | | 16,8 | |
| | RK6174 | ■ | 17,4 | 3100 | | HB3100 | | HA110R | | |
| | RK7167 | ■ | 16,7 | 4300 | HB2000 | HB4100 | HA75R | HA132R | | |
| | RK7176 | ■ | 17,6 | | | | | | 4100 | HB3600 |



MODEL DESCRIPTION

This lightweight line is designed for use with mobile crushers. It can handle hammers up to 300 kg and delivers horizontal reach of up to 3.17 m and vertical reach of up to 1.15 m.

APPLICATION



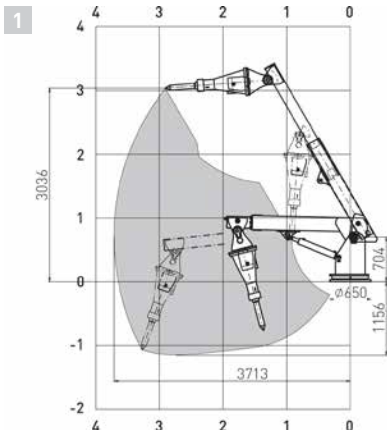
mobile crushers

ROTATION

frame rotation 72°

| Implement model | Application | Maximum reach [mm] | | Weight [kg] | Connecting flange ø [mm] | Max. hammer weight [kg] |
|-----------------|-------------|--------------------|----------|-------------|--------------------------|-------------------------|
| | | horizontal | vertical | | | |
| RK 1027 | | 3 170 | 1 150 | 845 | 650 | 300 |

RANGE OF MOTION



Vertical range can be increased by up to 1 m by using an extension between the hammer and adapter; custom options available to meet customer specifications and local construction conditions.

Y VERTICAL HAMMER RANGE





MODEL DESCRIPTION

The RK 2 is a lightweight line specifically for use with mobile crushers, smaller stationary crushers and recycling lines. It can handle hammers up to 300 kg and delivers a perpendicular hammer reach of up to ~3.5 m.

APPLICATION



mobile crushers



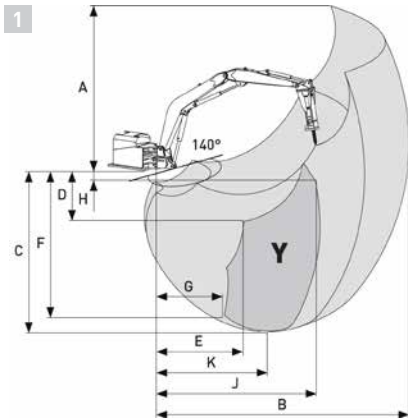
jaw crushers

ROTATION

rotating console, working angle of 140°

| Implement model | Application | Maximum reach [mm] | | Weight [kg] | Boom [mm] | Arm [mm] | Connect-ing flange [mm] | Standard drive unit | Max. hammer weight [kg] |
|-----------------|-------------|--------------------|----------|-------------|-----------|----------|-------------------------|---------------------|-------------------------|
| | | horizontal | vertical | | | | | | |
| RK 2027 | ■ ■ | 2 700 | 2 300 | 965 | 1 500 | 1000 | 860×800 | HA 15 | 300 |
| RK 2030 | ■ ■ | 3 000 | 2 300 | 980 | 1 800 | | | | |
| RK 2031 | ■ ■ | 3 100 | 2 700 | 970 | 1 500 | 1500 | | | |
| RK 2035 | ■ ■ | 3 500 | 2 800 | 1 000 | 1 800 | | | | |

RANGE OF MOTION



Vertical range can be increased by up to 1 m by using an extension between the hammer and adapter; custom options available to meet customer specifications and local construction conditions.

Y VERTICAL HAMMER RANGE

| Implement model | All dimensions are in metres | | | | | | | | | |
|-----------------|------------------------------|-----|-----|-----|-----|-----|-----|-----|-----|-----|
| | A | B | C | D | E | F | G | H | J | K |
| RK 2027 | 4,8 | 4,4 | 2,3 | 0,5 | 1,1 | 2,2 | 1,5 | 1,3 | 2,7 | 1,8 |
| RK 2030 | 5,1 | 4,7 | 2,3 | 0,2 | 1,2 | 2,3 | 1,7 | 1,2 | 3,0 | 2,3 |
| RK 2031 | 4,6 | 4,4 | 2,5 | 0,6 | 1,3 | 2,3 | 1,1 | 0,4 | 3,1 | 1,8 |
| RK 2035 | 5,6 | 5,2 | 2,8 | 0,6 | 1,5 | 2,7 | 1,6 | 1,4 | 3,5 | 2,8 |





MODEL DESCRIPTION

The RK 3 line is specifically for use with stationary crushers in irregular operation. This line is the most widespread in Czech Republic. It feeds crushers that measure approx. 1200 x 1000 mm. It can handle hammers up to approx. 720 kg.

APPLICATION

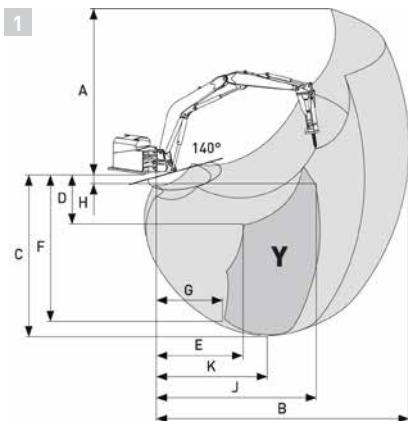
- mobile crushers
- jaw crushers
- grates

ROTATION

rotating console, working angle of 140°

| Implement model | Application | Maximum reach [mm] | | Weight [kg] | Boom [mm] | Arm [mm] | Connect-ing flange [mm] | Standard drive unit | Max. hammer weight [kg] |
|-----------------|-------------|--------------------|----------|-------------|-----------|----------|-------------------------|---------------------|-------------------------|
| | | horizontal | vertical | | | | | | |
| RK 3027 | | 2 700 | 1 800 | 2 000 | 1 800 | 1 000 | 860x840 | HA 30 | 720 |
| RK 3033 | | 3 300 | 3 400 | 1 700 | 1 900 | 1 500 | | | |
| RK 3035 | | 3 500 | 3 800 | 1 800 | 1 800 | 1 800 | | | |
| RK 3036 | | 3 600 | 3 700 | 1 750 | 1 900 | 1 800 | | | |
| RK 3042 | | 4 200 | 4 700 | 2 000 | 2 600 | 1 800 | | | |
| RK 3043 | | 4 300 | 4 000 | 2 100 | 2 600 | 1 800 | 1 000x840 | | 520 |
| RK 3052 | | 5 200 | 5 200 | 2 150 | 3 200 | 2 000 | | | |
| RK 3057 | | 5 700 | 5 400 | 2 400 | 3 600 | 2 000 | | | |
| RK 3061 | | 6 100 | 5 900 | 2 700 | 3 600 | 2 500 | | | |
| RK 3062 | | 6 200 | 5 100 | 2 900 | 3 800 | 2 800 | | | |

RANGE OF MOTION



Vertical range can be increased by up to 1 m by using an extension between the hammer and adapter; custom options available to meet customer specifications and local construction conditions.

Y VERTICAL HAMMER RANGE

| Implement model | All dimensions are in metres | | | | | | | | | |
|-----------------|------------------------------|-----|-----|-----|-----|-----|-----|-----|-----|-----|
| | A | B | C | D | E | F | G | H | J | K |
| RK 3027 | 4,2 | 3,9 | 1,8 | 1,0 | 1,1 | 1,7 | 1,3 | 0 | 2,7 | 1,9 |
| RK 3033 | 3,2 | 4,9 | 3,4 | 1,0 | 1,5 | 3,2 | 1,3 | 1,2 | 3,3 | 2,0 |
| RK 3035 | 3,9 | 5,5 | 3,8 | 1,7 | 1,3 | 3,8 | 1,7 | 2,6 | 3,5 | 2,1 |
| RK 3036 | 3,2 | 5,1 | 3,7 | 1,4 | 1,4 | 3,5 | 1,1 | 1,4 | 3,6 | 2,0 |
| RK 3042 | 5,7 | 6,2 | 4,7 | 0,6 | 1,6 | 4,7 | 2,1 | 2,7 | 4,2 | 2,5 |
| RK 3043 | 5,5 | 6,3 | 4,0 | 0,6 | 1,7 | 4,0 | 2,5 | 2,2 | 4,3 | 3,0 |
| RK 3052 | 4,8 | 7,1 | 5,2 | 0,8 | 2,1 | 5,2 | 2,9 | 2,1 | 5,2 | 3,2 |
| RK 3057 | 5,2 | 7,5 | 5,4 | 0,4 | 2,6 | 5,4 | 3,3 | 2,0 | 5,7 | 3,6 |
| RK 3061 | 5,3 | 7,9 | 5,9 | 0,9 | 2,7 | 5,9 | 3,0 | 2,3 | 6,1 | 3,6 |
| RK 3062 | 6,0 | 7,6 | 5,1 | 2,0 | 2,4 | 4,4 | 1,6 | 0,1 | 6,2 | 4,2 |





MODEL DESCRIPTION

The RK 4 line features a more rugged design. It is intended for stationary crushers - even cone crushers. It is also used in underground mines as primary breaking equipment. It is suitable for permanent use as rock breaking equipment for work on the grate. It can handle hammers up to 1200 kg.

APPLICATION



jaw crushers



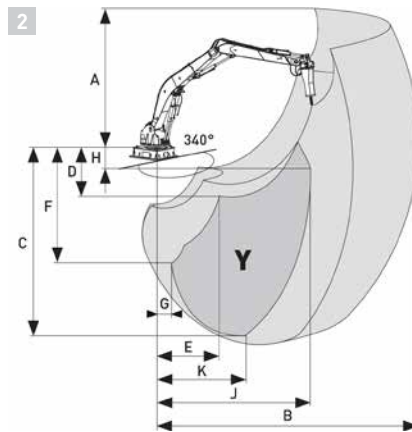
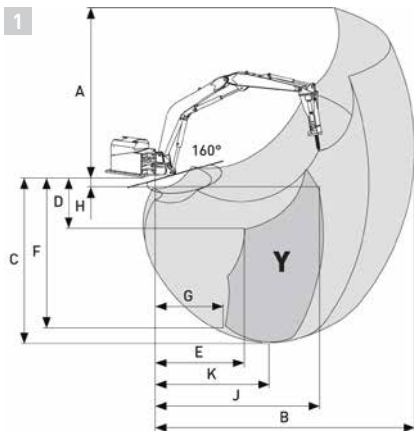
grates

ROTATION

rotating console, working angle of 160°; rotating frame, working angle of 340° with stops

| Implement model | Application | Maximum reach [mm] | | Weight [kg] | Boom [mm] | Arm [mm] | Standard drive unit | Max. hammer weight [kg] |
|-----------------|-------------|--------------------|----------|-------------|-----------|----------|---------------------|-------------------------|
| | | horizontal | vertical | | | | | |
| RK 4046 | ■ ■ | 4 600 | 3 000 | 4 130 | 2 600 | 1 800 | HA 45 | 1 200 |
| RK 4057 | ■ ■ | 5 700 | 3 500 | 4 380 | 3 200 | 2 200 | | |
| RK 4060 | ■ ■ | 6 000 | 3 600 | 4 450 | 2 850 | 2 300 | | |
| RK 4064 | ■ ■ | 6 400 | 4 700 | 4 500 | 3 600 | 2 500 | HA 37 | 1 000 |
| RK 4069 | ■ ■ | 8 650 | 4 800 | 5 050 | 4 000 | 3 200 | | |
| RK 4072 | ■ ■ | 7 200 | 6 600 | 4 790 | 4 100 | 3 200 | | |
| RK 4076 | ■ ■ | 7 200 | 5 500 | 4 500 | 4 000 | 4 000 | | |
| RK 4089 | ■ ■ | 8 900 | 8 100 | 5 100 | 4 600 | 4 500 | | |
| RK 4101 | ■ ■ | 10 100 | 8 900 | 5 490 | 5 600 | 4 800 | | |

RANGE OF MOTION



Vertical range can be increased by up to 1 m by using an extension between the hammer and adapter; custom options available to meet customer specifications and local construction conditions.

Y VERTICAL HAMMER RANGE

| Implement model | All dimensions are in metres | | | | | | | | | | |
|-----------------|------------------------------|------|------|-----|-----|-----|-----|-----|------|-----|-----|
| | A | B | C | D | E | F | G | H | J | K | |
| 1 | RK 4060-C | 7,5 | 6,9 | 3,6 | 0,4 | 2,2 | 3,1 | 2,0 | 1,4 | 5,2 | 3,2 |
| | RK 4069-C | 5,7 | 8,6 | 4,8 | 0,7 | 3,4 | 4,5 | 2,4 | 1,3 | 6,9 | 4,2 |
| 2 | RK 4046-G | 7,3 | 6,9 | 3,0 | 0,7 | 1,2 | 2,8 | 2,3 | 2,0 | 4,6 | 3,2 |
| | RK 4057-G | 8,1 | 7,9 | 3,5 | 0,5 | 1,4 | 3,2 | 2,6 | 2,3 | 5,7 | 3,8 |
| | RK 4060-G | 7,5 | 7,4 | 3,5 | 0,3 | 2,3 | 2,2 | 2,6 | 2,5 | 7,3 | 3,5 |
| | RK 4064-G | 7,8 | 8,5 | 4,7 | 0,4 | 3,3 | 4,5 | 3,0 | 2,1 | 6,4 | 4,1 |
| | RK 4069-G | 5,0 | 8,9 | 5,5 | 1,3 | 3,7 | 5,1 | 3,0 | 0,6 | 6,9 | 4,4 |
| | RK 4072-G | 3,6 | 9,3 | 6,6 | 2,2 | 3,7 | 6,3 | 2,8 | 1,8 | 7,2 | 4,3 |
| | RK 4076-G | 6,6 | 9,8 | 6,0 | 2,3 | 3,5 | 4,9 | 2,4 | 0,4 | 7,6 | 4,0 |
| | RK 4089-G | 4,0 | 11,0 | 8,1 | 3,2 | 4,3 | 7,6 | 2,6 | 1,5 | 8,9 | 4,5 |
| RK 4101-G | 4,6 | 12,2 | 8,9 | 2,9 | 5,1 | 8,4 | 3,3 | 1,9 | 10,1 | 5,9 | |

APPLICATION



grates

MODEL DESCRIPTION

The RK4-HD line feature a more rugged design. It is intended for permanent use as rock breaking device for work on grates. It can handle hammers up to 3600 kg.

| | Implement model | Application | Maximum reach [mm] | | Weight [kg] | Boom [mm] | Arm [mm] | Standard drive unit | Max. hammer weight [kg] |
|---|------------------|-------------|--------------------|----------|-------------|-----------|----------|---------------------|-------------------------|
| | | | horizontal | vertical | | | | | |
| 1 | RK 4046 - HD/C | ■ | 4 770 | 3 200 | 6 100 | 2 600 | 1 800 | HA110R | 3 600 |
| | RK 4060.1 - HD/C | ■ | 6 000 | 4 000 | 6 100 | 3 300 | 2 500 | | |
| | RK 4060.2 - HD/C | ■ | 6 000 | 5 500 | 6 100 | 3 300 | 2 500 | | |
| | RK 4064 - HD/C | ■ | 6 400 | 3 800 | 6 400 | 3 600 | 2 500 | | |
| | RK4069.1 - HD/C | ■ | 6 900 | 4 400 | 6 400 | 3 900 | 2 900 | HA75R | 2 500 |
| | RK4069.2 - HD/C | ■ | 6 900 | 6 100 | 6 400 | 3 900 | 2 900 | | |
| | RK 4089 - HD/C | ■ | 8 900 | 5 100 | 7 300 | 5 000 | 3 900 | | |
| 2 | RK 4060 - HD/G | ■ | 5 100 | 2 800 | 6 500 | 2 850 | 2 300 | HA110R | 3 600 |
| | RK 4064-HD/G | ■ | 6 000 | 2 900 | 6 900 | 3 600 | 2 500 | | |
| | RK 4089 HD/G | ■ | 8 600 | 4 100 | 7 100 | 4 600 | 4 500 | HA75R | 2 500 |

| Implement model | All dimensions are in metres | | | | | | | | | |
|------------------|------------------------------|------|-----|------|-----|------|-----|-----|-----|-----|
| | A | B | C | D | E | F | G | H | J | K |
| RK 4046 - HD/C | 6,2 | 6,7 | 3,2 | 0,3 | 2,1 | 3,2 | 3,5 | 2,0 | 4,7 | 3,5 |
| RK 4060.1 - HD/C | 5,7 | 8,2 | 4,0 | -0,3 | 2,6 | 3,7 | 2,5 | 1,7 | 6,0 | 3,8 |
| RK 4060.2 - HD/C | 5,7 | 8,2 | 5,5 | -1,6 | 3,0 | 5,2 | 2,3 | 1,7 | 6,0 | 3,6 |
| RK 4064-HD/C | 8,2 | 8,3 | 3,8 | 0,1 | 2,6 | 3,7 | 2,8 | 1,6 | 6,4 | 4,1 |
| RK4069.1 - HD/C | 5,7 | 8,2 | 4,4 | 0,0 | 2,9 | 4,0 | 3,0 | 1,7 | 6,9 | 4,6 |
| RK4069.2 - HD/C | 5,7 | 8,2 | 6,1 | 1,5 | 3,4 | 5,7 | 2,7 | 1,7 | 6,9 | 4,2 |
| RK 4089 HD/C | 10,0 | 10,8 | 5,1 | 0,5 | 3,6 | 1,5 | 6,1 | 3,9 | 8,9 | 6,1 |
| RK 4064-HD/G | 7,5 | 7,1 | 2,8 | 0,0 | 2,2 | 2,7 | 2,6 | 1,0 | 5,1 | 2,8 |
| RK 4089-HD/G | 8,3 | 8,0 | 2,9 | 0,5 | 2,5 | -0,5 | 4,1 | 0,9 | 6,0 | 3,8 |
| RK 4089 HD/G | 9,8 | 10,5 | 4,1 | 0,7 | 3,6 | -1,5 | 2,7 | 0,8 | 8,6 | 5,7 |





MODEL DESCRIPTION

The RK 5 line is strong and robust. This design permits continuous, three-shift operation for all larger stationary and conical crushers. It is suitable for permanent use as rock breaking equipment for work on the grate. It can handle hammers up to 2000 kg.

APPLICATION



grates



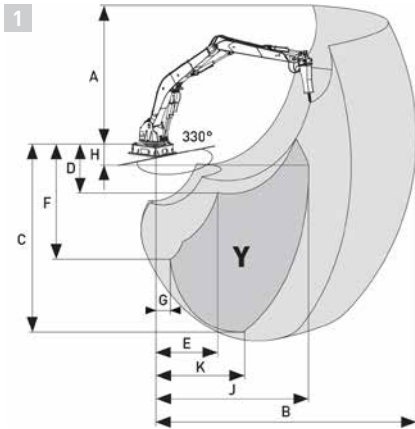
gyrating crushers

ROTATION

rotating frame, working angle of 330° with stops

| Implement model | Application | Maximum reach [mm] | | Weight [kg] | Boom [mm] | Arm [mm] | Standard drive unit | Max. hammer weight [kg] |
|-----------------|-------------|--------------------|----------|-------------|-----------|----------|---------------------|-------------------------|
| | | horizontal | vertical | | | | | |
| RK 5050 | ■ ■ | 5 000 | 4 200 | 5 800 | 2 850 | 2 100 | HA 55 | 2 000 |
| RK 5060 | ■ ■ | 6 000 | 3 600 | 5 800 | 2 850 | 2 300 | | |
| RK 5069 | ■ ■ | 6 900 | 5 500 | 7 100 | 4 000 | 3 200 | | |
| RK 5085 | ■ ■ | 8 500 | 6 400 | 7 650 | 4 800 | 3 900 | | 1 700 |
| RK 5089 | ■ ■ | 8 900 | 6 900 | 8 500 | 4 800 | 4 400 | | |
| RK 5098 | ■ ■ | 9 800 | 8 900 | 10 800 | 5 700 | 4 500 | | |
| RK 5108 | ■ ■ | 10 800 | 10 000 | 11 200 | 6 000 | 5 400 | | |

RANGE OF MOTION



Vertical range can be increased by up to 1 m by using an extension between the hammer and adapter; custom options available to meet customer specifications and local construction conditions.

Y VERTICAL HAMMER RANGE

| Implement model | All dimensions are in metres | | | | | | | | | |
|-----------------|------------------------------|------|------|-----|-----|-----|-----|-----|------|-----|
| | A | B | C | D | E | F | G | H | J | K |
| 1 RK 5050 | 7,1 | 7,5 | 4,2 | 0,5 | 2,6 | 4,1 | 0,7 | 2,2 | 5,0 | 3,6 |
| RK 5069 | 3,5 | 9,2 | 5,5 | 2,1 | 3,3 | 2,4 | 2,3 | 1,1 | 6,9 | 4,1 |
| RK 5085 | 4,9 | 10,9 | 6,4 | 2,4 | 4,5 | 6,1 | 2,3 | 1,0 | 8,5 | 5,1 |
| RK 5098 | 2,4 | 12,1 | 8,9 | 3,4 | 4,6 | 8,5 | 3,1 | 1,3 | 9,8 | 5,2 |
| RK 5108 | 2,1 | 13,2 | 10,0 | 4,1 | 4,7 | 7,4 | 0,7 | 1,0 | 10,8 | 5,5 |

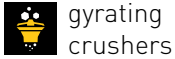




MODEL DESCRIPTION

The RK 6 is a super heavy duty line. The robustness of its design makes it the perfect choice for continuous operation and stationary rock breaking with large hydraulic hammers up to 2500 kg.

APPLICATION

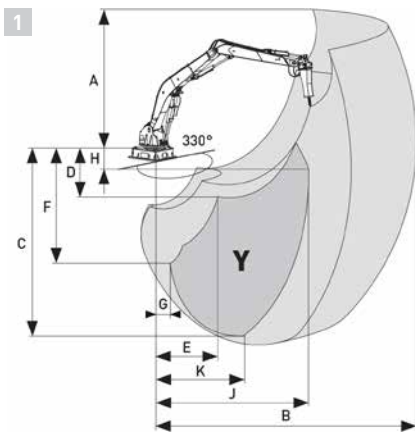


ROTATION

rotating frame, working angle of 330° with stops

| Implement model | Application | Maximum reach [mm] | | Weight [kg] | Boom [mm] | Arm [mm] | Connecting flange [mm] | Standard drive unit | Max. hammer weight [kg] |
|-----------------|-------------|--------------------|----------|-------------|-----------|----------|------------------------|---------------------|-------------------------|
| | | horizontal | vertical | | | | | | |
| RK 6110 | ■ | 11 100 | 8 700 | 22 200 | 6 600 | 5 600 | 2 200 x 2 600 | HA 75 R | 2 500 |
| RK 6128 | ■ | 12 800 | 9 100 | 23 000 | 7 300 | 6 200 | | | |
| RK 6130 | ■ | 13 000 | 10 150 | 23 600 | 7 500 | 6 700 | | | |
| RK 6145 | ■ | 14 450 | 11 320 | 24 000 | 8 300 | 7 400 | | | |
| RK 6151 | ■ | 15 100 | 10 800 | 24 350 | 8 300 | 8 000 | | | |
| RK 6155 | ■ | 15 550 | 12 200 | 24 700 | 9 300 | 7 400 | | | |
| RK 6168 | ■ | 16 800 | 12 800 | 26 500 | 10 600 | 7 400 | | | |
| RK 6174 | ■ | 17 400 | 13 800 | 27 300 | 9 000 | 8 500 | | | 3 100 |

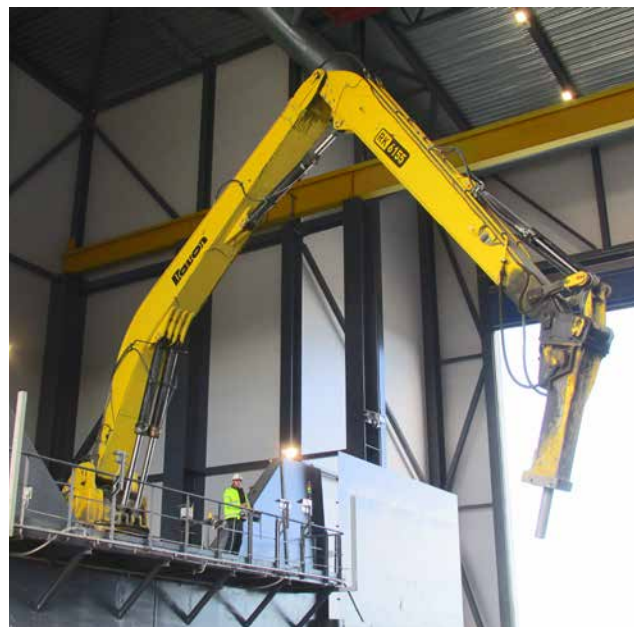
RANGE OF MOTION



Vertical range can be increased by up to 1 m by using an extension between the hammer and adapter; custom options available to meet customer specifications and local construction conditions.

Y VERTICAL HAMMER RANGE

| Implement model | All dimensions are in metres | | | | | | | | | |
|-----------------|------------------------------|------|------|-----|-----|------|-----|-----|------|------|
| | A | B | C | D | E | F | G | H | J | K |
| RK 6110 | 10,0 | 13,6 | 8,7 | 1,3 | 5,2 | 8,3 | 2,9 | 6,5 | 11,1 | 8 |
| RK 6128 | 11,1 | 15,0 | 9,1 | 0,3 | 6,6 | 7,3 | 3,2 | 7,4 | 12,8 | 10,7 |
| RK 6130 | 11,1 | 15,5 | 10,2 | 1,5 | 6,1 | 7,6 | 0,6 | 7,2 | 13,0 | 9,6 |
| RK 6145 | 11,3 | 17,2 | 11,5 | 2,2 | 6,4 | 8,0 | 1,5 | 7,6 | 14,1 | 10,2 |
| RK 6151 | 11,3 | 17,2 | 11,5 | 2,2 | 6,4 | 8,0 | 2,2 | 7,6 | 14,1 | 10,3 |
| RK 6155 | 11,3 | 18,0 | 12,2 | 1,6 | 7,4 | 9,5 | 3,0 | 9,0 | 15,5 | 10,6 |
| RK 6168 | 11,5 | 19,4 | 12,8 | 0,9 | 8,5 | 9,9 | 3,9 | 0,8 | 16,8 | 10,0 |
| RK 6174 | 14,3 | 20,0 | 13,8 | 3,0 | 6,5 | 11,9 | 2,7 | 0,9 | 17,4 | 8,2 |





MODEL DESCRIPTION

The RK 7 line is characterised by a massive frame and a strong, robust steel structure with high mechanical resistance and extreme range. It is designed for continuous use in extreme duty conditions for large stationary conical crushers and for work on the grate. It can handle hammers up to 4300 kg.

APPLICATION



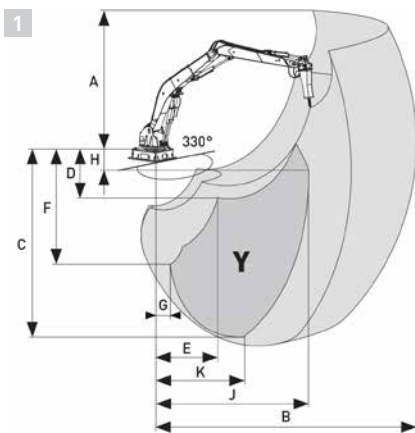
gyrating crushers

ROTATION

rotating frame, working angle of 330°

| Implement model | Application | Maximum reach [mm] | | Weight [kg] | Boom [mm] | Arm [mm] | Connect-ing flange [mm] | Standard drive unit | Max. hammer weight [kg] |
|-----------------|-------------|--------------------|----------|-------------|-----------|----------|-------------------------|---------------------|-------------------------|
| | | horizontal | vertical | | | | | | |
| RK 7167 | | 16 700 | 12 770 | 29 700 | 10 800 | 7 000 | 2 400 x 2 000 | HA 75 R | 4 300 |
| RK 7176 | | 17 600 | 13 500 | 31 000 | 10 800 | 8 000 | | | 4 100 |

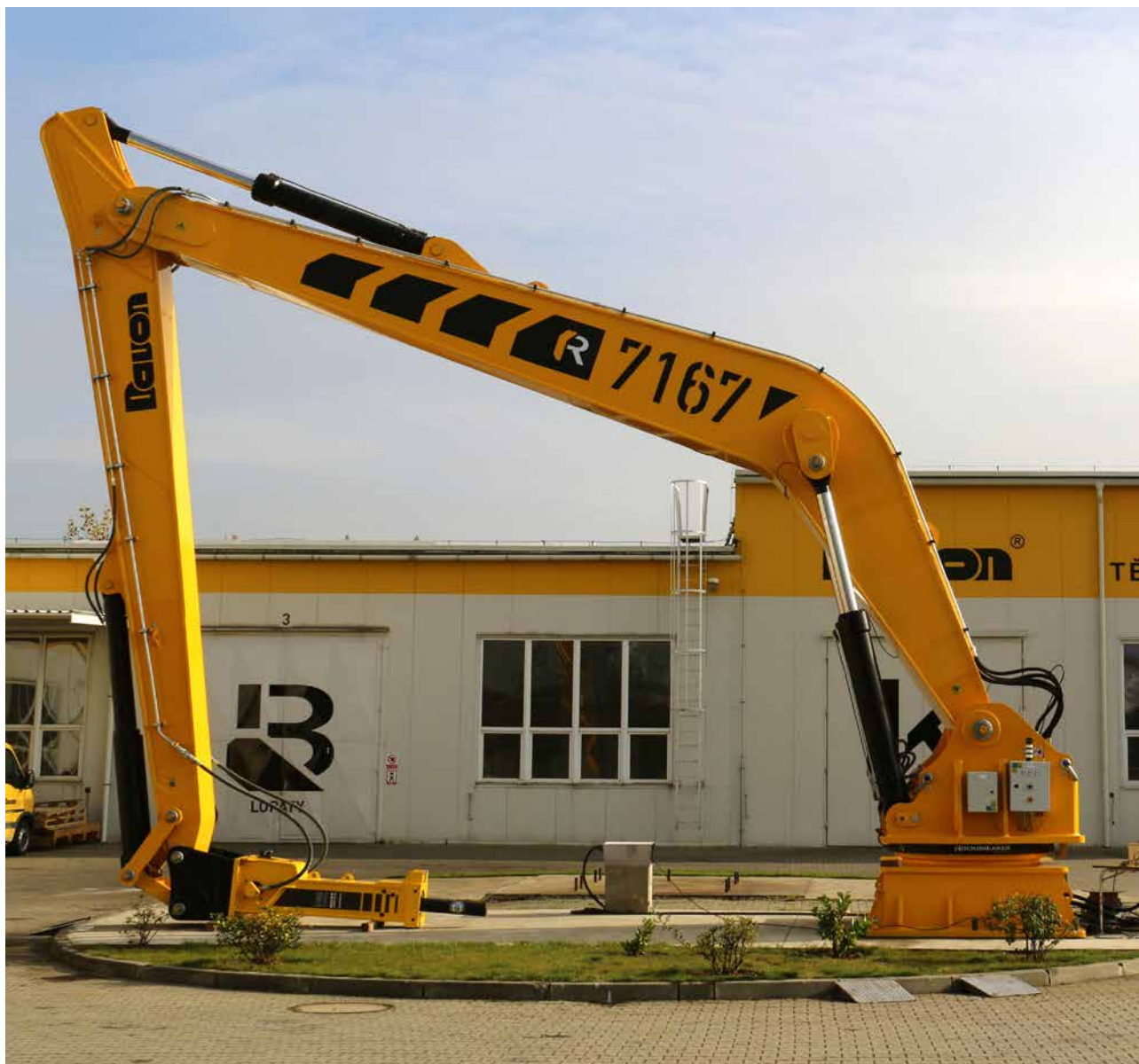
RANGE OF MOTION



Vertical range can be increased by up to 1 m by using an extension between the hammer and adapter; custom options available to meet customer specifications and local construction conditions.

Y VERTICAL HAMMER RANGE

| Implement model | All dimensions are in metres | | | | | | | | | |
|-----------------|------------------------------|------|------|-----|-----|------|-----|-----|------|------|
| | A | B | C | D | E | F | G | H | J | K |
| 1 RK 7167 | 13,3 | 19,5 | 13,0 | 3,0 | 8,6 | 12,1 | 4,7 | 0,6 | 16,5 | 11,6 |
| RK 7176 | 13,2 | 20,2 | 13,5 | 0,4 | 9,0 | 11,2 | 3,4 | 0,8 | 17,6 | 12,1 |





MODEL DESCRIPTION

- Three-phase, asynchronous motor
- 230 V / 400 V Wye configuration 3-phase, 50 Hz
- Output matching type and size of rockbreaker system
- Hydraulic fluid and air filters
- Hydraulic fluid cooler with thermostat
- Heating element with thermostat
- Electric level sensor, pressure gauge
- Electrical switchboard with main switch, contactors, fuses, thermal relays, transformer with rectifier and conditioning capacitors, central stop button
- Motor hour counter
- Hydraulic fluid reservoir with drain valve and emergency thermostat
- Top of the hydraulic unit
- Retaining

CUSTOM OPTIONS

- Pressurised hydraulic fluid reservoir for high altitude use
- Arctic variant for low temperatures down to -43°C
- Body for the hydraulic unit

| | Implement model | Height | Width | Lenght | Max Weight | Power rating | Flow | Maximum pressure | Reservoir capacity |
|-----------|-----------------|--------|-------|--------|------------|--------------|---------|------------------|--------------------|
| | | mm | mm | mm | kg | kW | l / min | bar | l |
| WITH BODY | HA 15 | 1785 | 1000 | 1400 | 720 | 15 | 50 | 200 | 250 |
| | HA 18 | 1785 | 1000 | 1400 | 780 | 18,5 | 62 | 200 | 250 |
| | HA 22 | 1785 | 1000 | 1400 | 820 | 22 | 70 | 200 | 250 |
| | HA 30 R | 1785 | 1000 | 1400 | 895 | 30 | 100 | 200 | 250 |
| | HA 37 R | 1785 | 1000 | 1400 | 980 | 37 | 120 | 250 | 250 |
| | HA 45 R | 1785 | 1000 | 1800 | 1150 | 45 | 150 | 320 | 250 |
| | HA 55 R | 2000 | 1000 | 1800 | 1400 | 55 | 180 | 320 | 350 |
| | HA 75 R | 2000 | 1000 | 2500 | 1950 | 75 | 250 | 320 | 350 |
| | HA 110 R | 2000 | 1000 | 2500 | 2200 | 110 | 350 | 320 | 350 |
| | HA 132 R | 2000 | 1000 | 2500 | 2350 | 132 | 420 | 320 | 400 |

| | Implement model | Height | Width | Lenght | Max Weight | Power rating | Flow | Maximum pressure | Reservoir capacity |
|--------------|-----------------|--------|-------|--------|------------|--------------|---------|------------------|--------------------|
| | | mm | mm | mm | kg | kW | l / min | bar | l |
| WITHOUT BODY | HA 15 | 1357 | 740 | 1420 | 410 | 15 | 50 | 200 | 250 |
| | HA 18 | 1357 | 740 | 1420 | 650 | 18,5 | 62 | 200 | 250 |
| | HA 22 | 1357 | 740 | 1420 | 650 | 22 | 70 | 200 | 250 |
| | HA 30 R | 1374 | 740 | 1510 | 595 | 30 | 100 | 200 | 250 |
| | HA 37 R | 1620 | 1040 | 1730 | 911 | 37 | 120 | 250 | 250 |
| | HA 45 R | 1620 | 1040 | 1730 | 1070 | 45 | 150 | 320 | 250 |
| | HA 55 R | 2133 | 1040 | 1890 | 1550 | 55 | 180 | 320 | 350 |
| | HA 75 R | 2023 | 1222 | 2400 | 1800 | 75 | 250 | 320 | 350 |
| | HA 110 R | 2000 | 1000 | 2400 | 2050 | 110 | 350 | 320 | 350 |
| | HA 132 R | 2000 | 1000 | 2400 | 2200 | 132 | 420 | 320 | 400 |



GENERAL DESCRIPTION

- Demolition equipment is delivered with proven Atlas Copco hydraulic hammers as standard. Hydraulic hammers from other manufacturers or without any hydraulic hammer may be delivered upon request.

| | Implement model | Service Weight | Flow of hydraulic fluid | Working pressure | Blow frequency |
|----------------|-----------------|----------------|-------------------------|------------------|----------------|
| | | kg | l / min | bar | min-1 |
| Epiroc | SB 102 | 87 | 16-42 | 100-150 | 720-2280 |
| | SB 152 | 140 | 24-49 | 100-150 | 780-1920 |
| | SB 202 | 200 | 35-73 | 100-150 | 840-1800 |
| | SB 302 | 304 | 50-83 | 100-150 | 600-1380 |
| | SB 452 | 441 | 55-105 | 100-150 | 540-1260 |
| | SB 552 | 520 | 65-115 | 100-150 | 660-1140 |
| | MB 750 | 750 | 80-120 | 140-170 | 370-840 |
| | MB 1000 | 1000 | 85-130 | 160-180 | 350-750 |
| | MB 1200 | 1200 | 100-140 | 160-180 | 340-680 |
| | MB 1500 | 1500 | 120-155 | 160-180 | 330-680 |
| | MB 1700 | 1700 | 130-170 | 160-180 | 320-640 |
| | HB 2000 | 2000 | 150-190 | 160-180 | 300-600 |
| | HB 2500 | 2500 | 170-220 | 160-180 | 280-550 |
| | HB 3100 | 3100 | 210-270 | 160-180 | 280-560 |
| | HB 3600 | 3600 | 240-300 | 160-180 | 280-560 |
| HB 4700 | 4700 | 260-340 | 160-180 | 280-520 | |



1.1 AUTOMATIC CENTRAL LUBRICATION

Facilitates automatic lubrication of pin connections in the boom system.



1.2 CONTROL BOX WITH JOYSTICKS

Standard remote controls, the operator's station is connected via a special cable. This permits operation at a safe location with the best view of the rock breaking work.



3.1 CYLINDER COVER

The cover protects the piston rod in a hydraulic cylinder from damage.



4.1 MECHANICAL QUICK COUPLER

The mechanical quick coupler facilitates quick and easy change-out of hydraulic implements for other implements, such as release hooks, buckets, and grabs.



4.2 EXTENSION

The hydraulic hammer extension adapter increases the reach of demolition equipment.



5.1 HYDRAULIC HAMMER

A hydraulic hammer with corresponding parameters. DAVON rockbreaker systems are usually equipped with an Atlas Copco hammer, but may be equipped with any other brand or type of hammer.



5.2 HOOK

Mounted to the boom system instead of the hydraulic hammer. It is used to mechanically separate aggregates. The tip is made of HARDOX steel.



5.3 GRABS

Grabs may be mounted on the boom system of the equipment to handle various materials.



5.4 BUCKETS

Buckets may be mounted on the boom system of the equipment to handle various materials.



6 HYDRAULIC DRIVE UNIT

Drive units for demolition equipment. Models and output are defined based on the hammer in use and the size of the demolition equipment.



7.1 FOOTING BASKET

A steel basket for concreting into foundation structures to anchor a load-bearing column.



7.2 STEEL BOOM

A steel boom of the proper design and height is the perfect support underneath demolition equipment. It may have a walkway and a ladder.



7.3 OPERATOR'S CAB

Various configurations of the operator's cab increase operator comfort, isolating them from harmful external conditions, including noise, dust and high or low temperatures.



7.4 OPERATOR'S SEAT

A comfortable seat with conveniently arranged controls to increase operator comfort.



7.5 REMOTE CONTROL

A remote-control operator's station. This permits operation at a safe location with the best view of the rock breaking work.



7.6 HAMMER STAND

This steel stand is used to stow demolition equipment in a parked position when not in use.



7.7 CONTROL PANEL RACK

A simple rack used to install a control panel.



7.8 SUSPENDED CONTROL PANEL HANGER

A simple bracket for the control panel to suspend it from the railing of the crushing line.



MAIN PARTS

1 BASIC FRAME

- 1.1 AUTOMATIC CENTRAL LUBRICATION
- 1.2 CONTROL BOX WITH JOYSTICKS

2 BOOM

3 ARM

- 3.1 CYLINDER COVER

4 ADAPTER

- 4.1 MECHANICAL QUICK COUPLER
- 4.2 EXTENSION

5 WORK TOOL

- 5.1 HYDRAULIC HAMMER
- 5.2 HOOK
- 5.3 GRABS
- 5.4 BUCKETS

6 HYDRAULIC DRIVE UNIT

7 OTHER ACCESSORIES

- 7.1 FOOTING BASKET
- 7.2 STEEL BOOM
- 7.3 OPERATOR'S CAB
- 7.4 OPERATOR'S SEAT
- 7.5 REMOTE CONTROL
- 7.6 HAMMER STAND
- 7.7 CONTROL PANEL RACK
- 7.8 SUSPENDED CONTROL PANEL HANGER

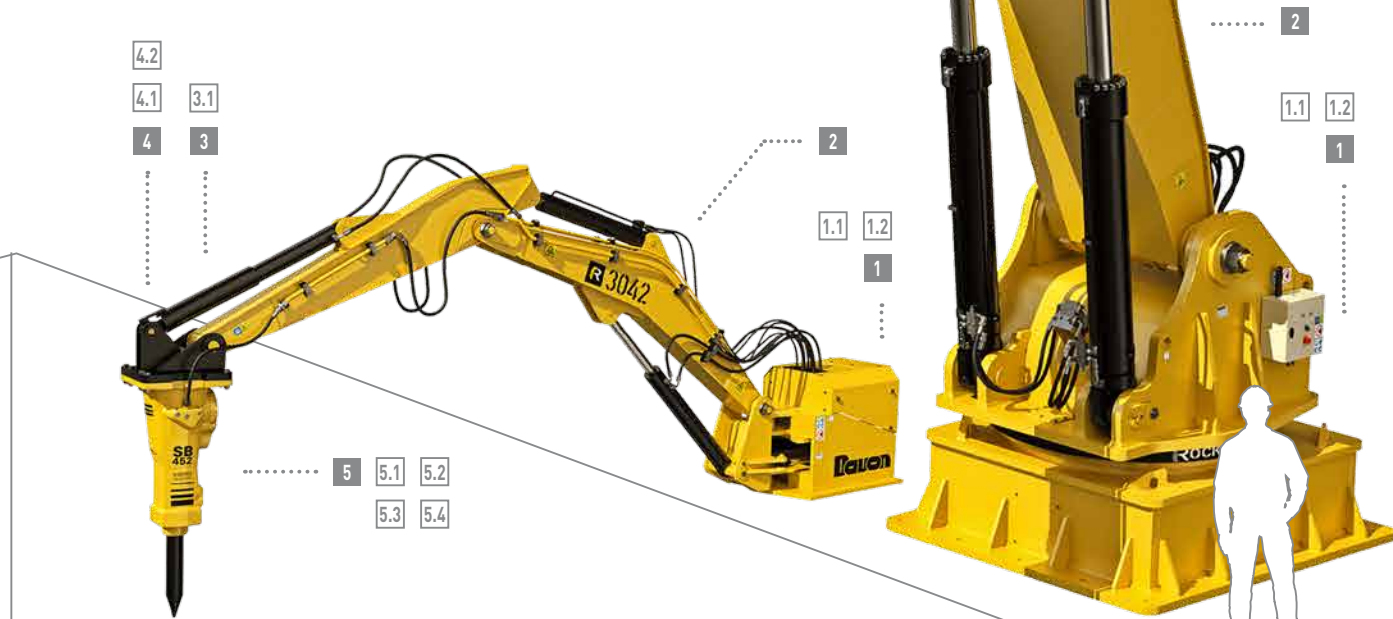


The parameters and equipment of each machine are designed on an individual basis to make them best suited to the user's needs as for the particular crushing application, material handling, type and size of the crusher, etc.

The picture only shows the illustration of the options, which may vary depending on the design characteristics of each machine type.



RK 7167
horizontal range
16 700 mm



RK 3042
horizontal range
4 200 mm





MINING AND CONSTRUCTION TECHNOLOGY
DEVELOPMENT – PRODUCTION – SALE

DAVON s.r.o. | Šumperská 1353 783 91
Uničov | Czech Republic

Tel.: +420 585 004 532

+420 585 004 539

Fax: +420 585 053 229

e-mail: sales@davoncompany.com

www.davoncompany.com

ROCKBREAKER
BOOM SYSTEM



DAVON s.r.o.
Šumperská 1353
783 91 Uničov
Czech Republic

2020-1